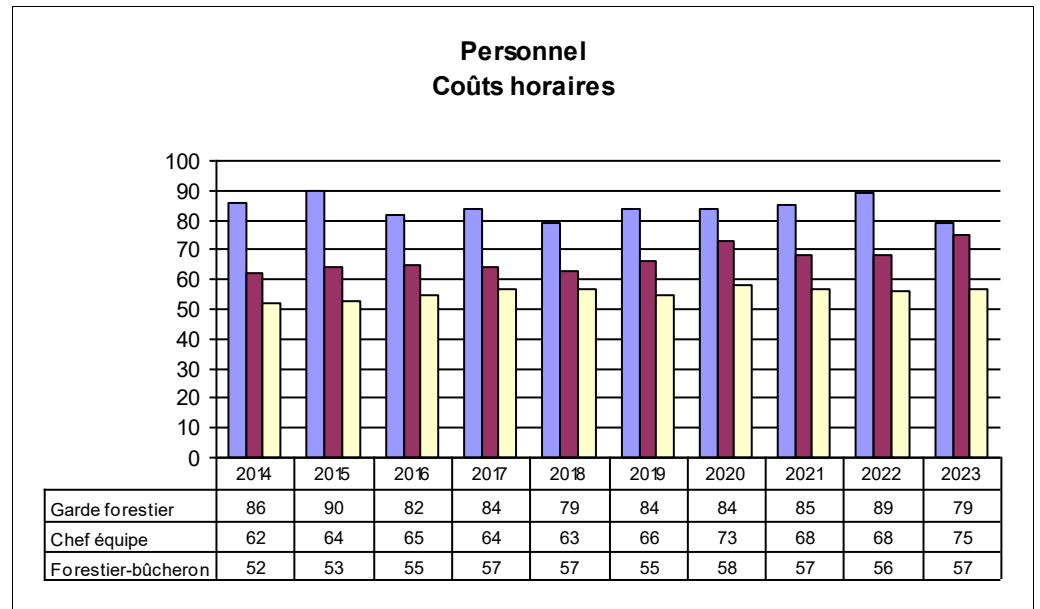
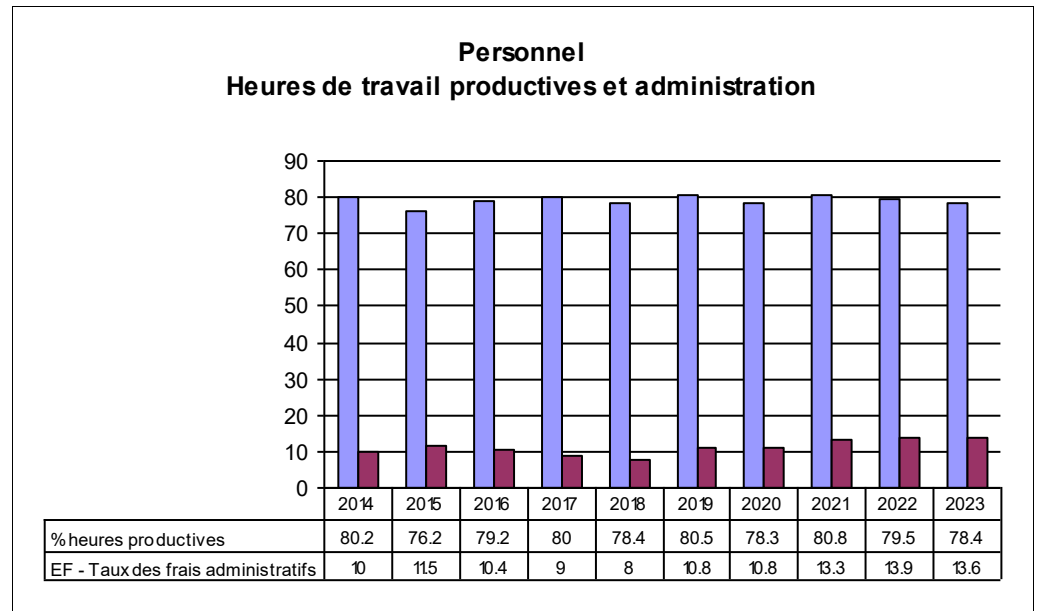
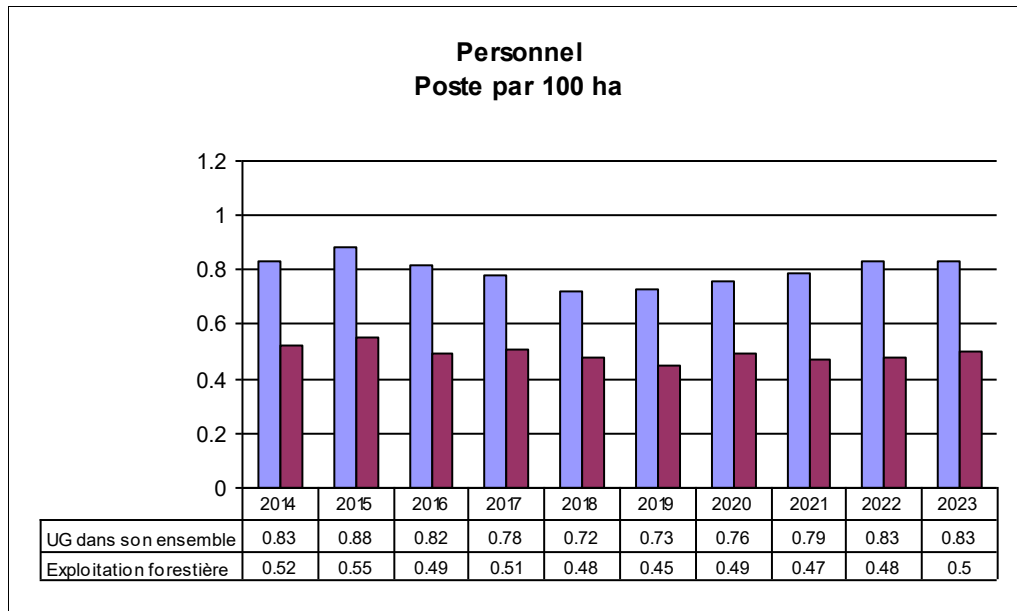
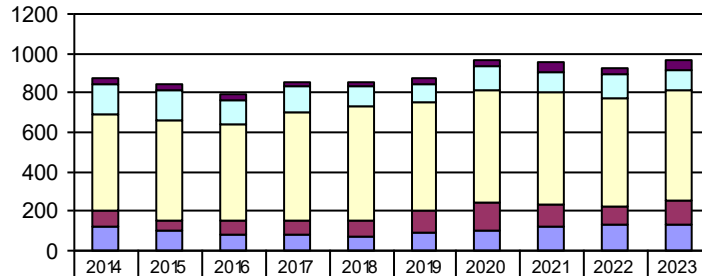


No Entreprise: **30** Plateau / Mittelland (FR)



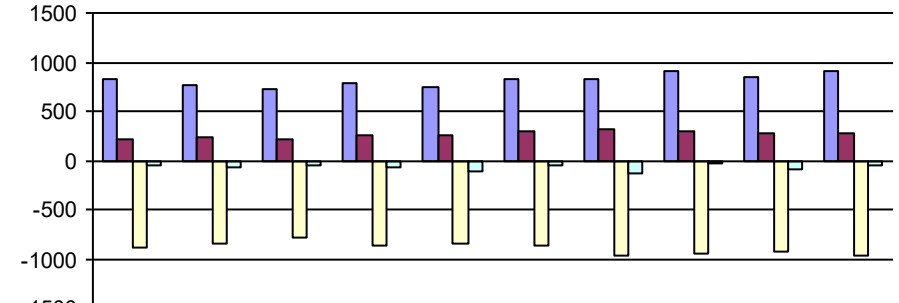
No Entreprise: 30 Plateau / Mittelland (FR)

Exploitation forestière
Coûts totaux par hectare



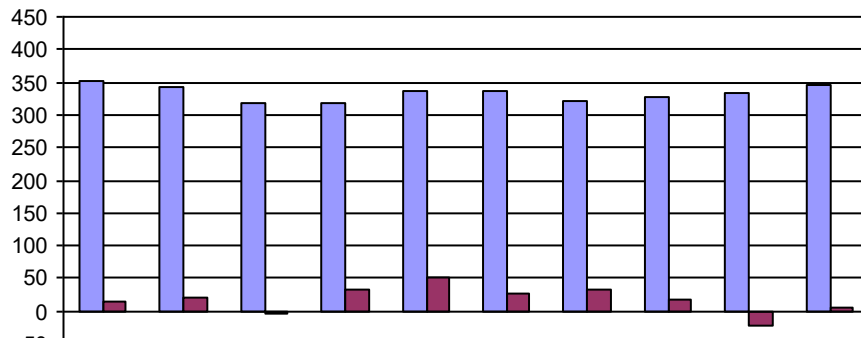
	2014	2015	2016	2017	2018	2019	2020	2021	2022	2023
Coûts pour entretien	37	33	28	26	25	26	31	45	35	50
Coûts pour 1er échelon de production	146	155	129	131	98	97	118	101	119	106
Coûts pour 2e échelon de production	489	502	488	550	575	547	569	577	548	553
Coûts pour autres activités	87	58	67	74	89	108	143	104	97	125
Coûts pour activités d'administration	117	97	83	77	68	94	104	126	129	131

Exploitation forestière
Résultat par hectare



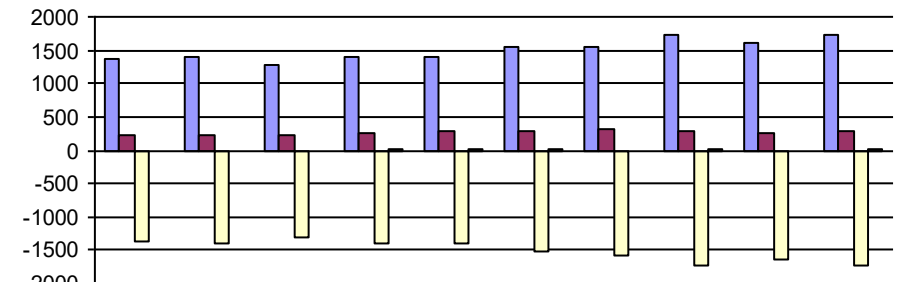
	2014	2015	2016	2017	2018	2019	2020	2021	2022	2023
Recettes totales	836	773	734	792.7	753.1	818.7	824.7	916.6	841.1	908.5
dont subventions	215.1	231.8	210.6	253.5	262	294.3	312.5	286.8	275.4	273
Coûts totaux	-884.5	-845.8	-794.9	-857.9	-856.3	-872.6	-965.7	-953.3	-928	-965.4
Résultat total	-48.4	-72.8	-61	-65.2	-103.2	-53.9	-141.1	-36.7	-86.9	-56.9

Prestations de service
Recettes et résultats par ha



	2014	2015	2016	2017	2018	2019	2020	2021	2022	2023
Recettes totales	351.1	343.6	318.9	318.5	337	337.3	321	326.3	334	347.1
Résultat total	15.9	22	-4.5	32.5	51.5	27.5	31.3	19	-21.8	4.9

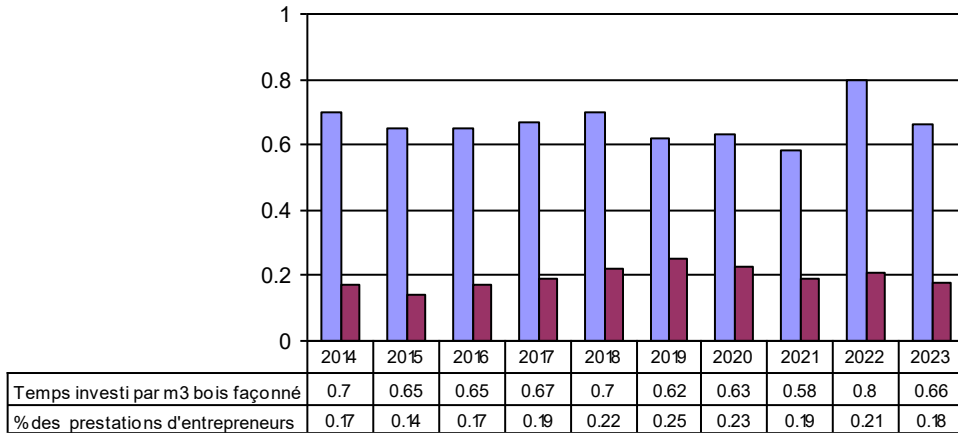
Entreprise dans son ensemble
Résultats par hectare



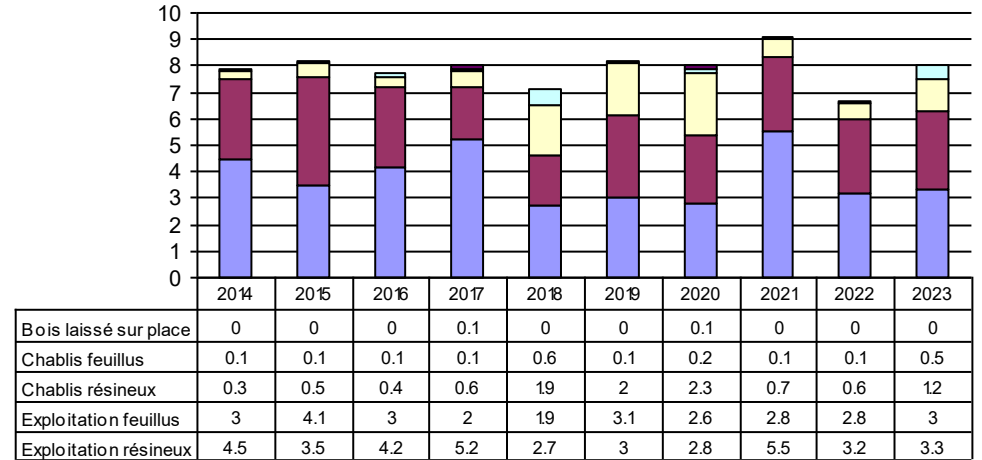
	2014	2015	2016	2017	2018	2019	2020	2021	2022	2023
Recettes totales	1359	1386	1290	1403	1400	1546	1546	1733	1620	1742
dont subventions	216.4	216.6	213.3	247.2	271.2	292	321.4	275.5	255.5	276.3
Dépenses totales	-1378	-1395	-1319	-1397	-1396	-1516	-1567	-1716	-1634	-1715
Résultat total	-19	-9	-29	6	4	30	-21	16	-14	27

No Entreprise: 30 Plateau / Mittelland (FR)

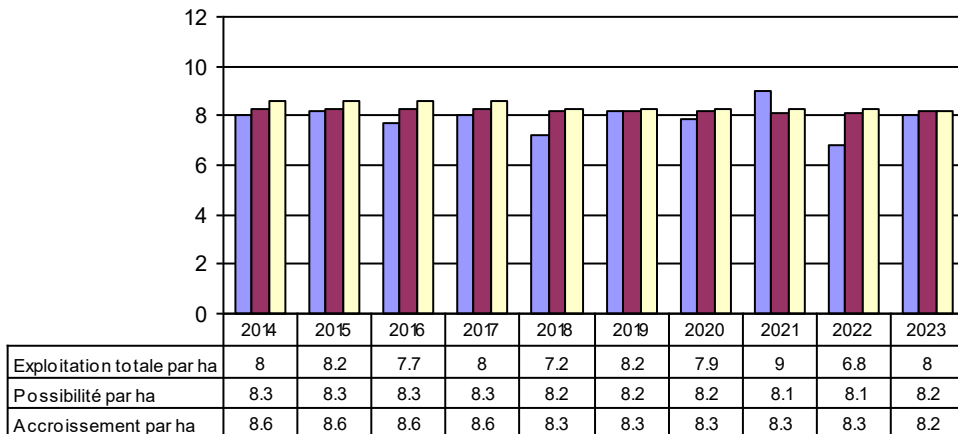
Exploitation forestière
Temps consacré par m3 / Engagement d'entrepreneurs



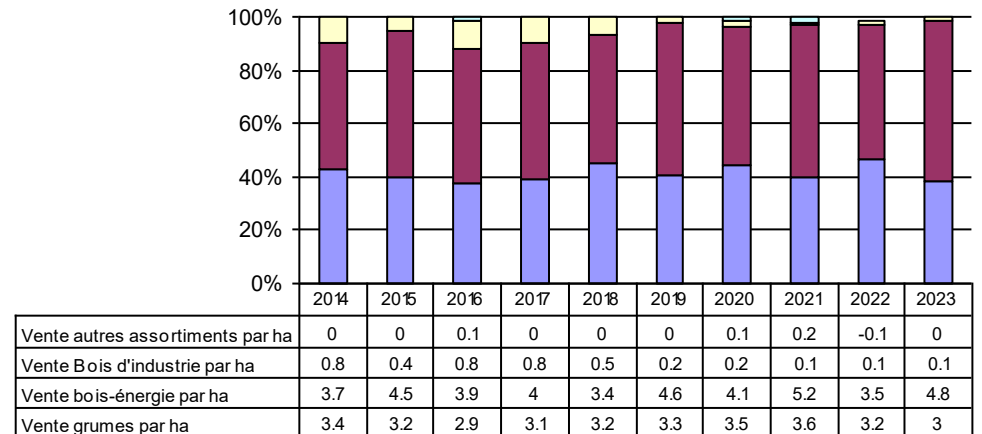
Exploitation forestière
Volume de bois exploité en m3 par ha



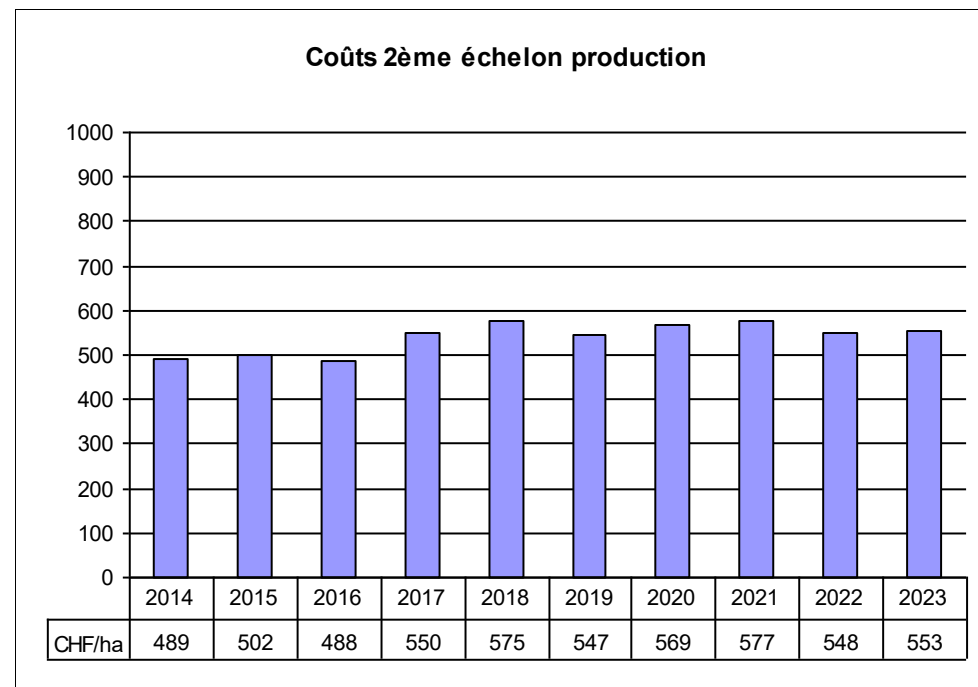
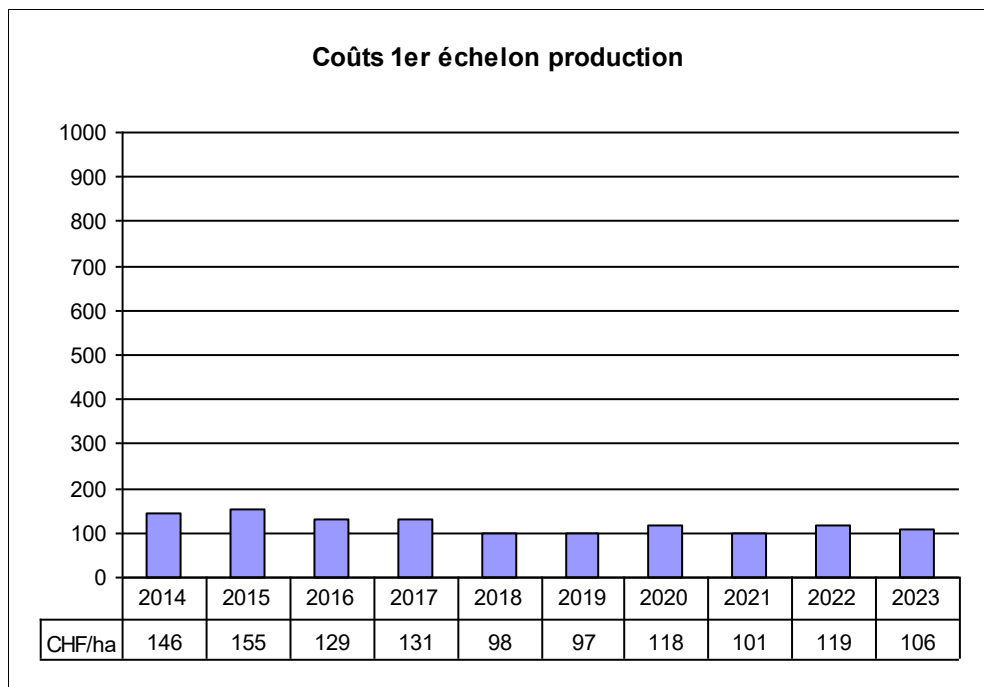
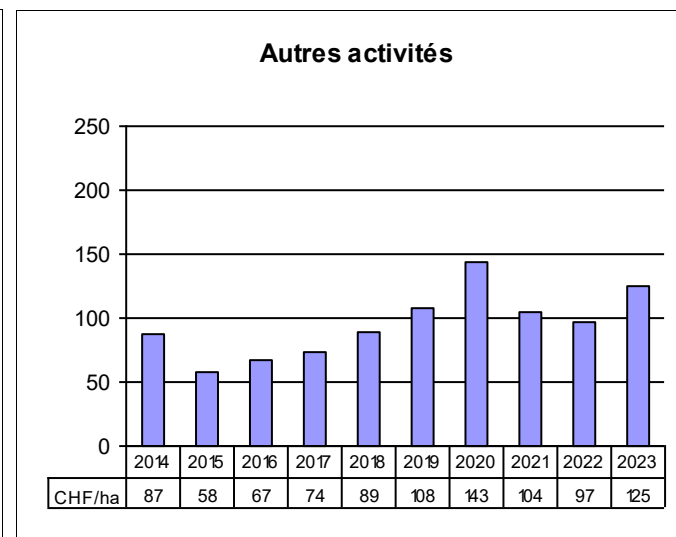
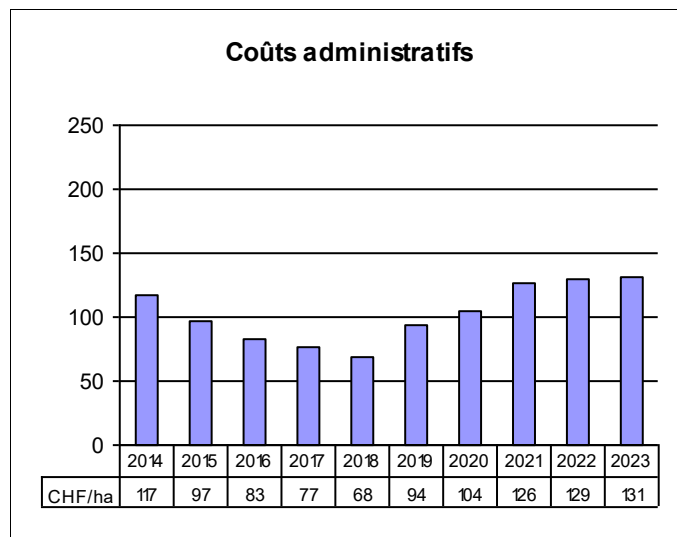
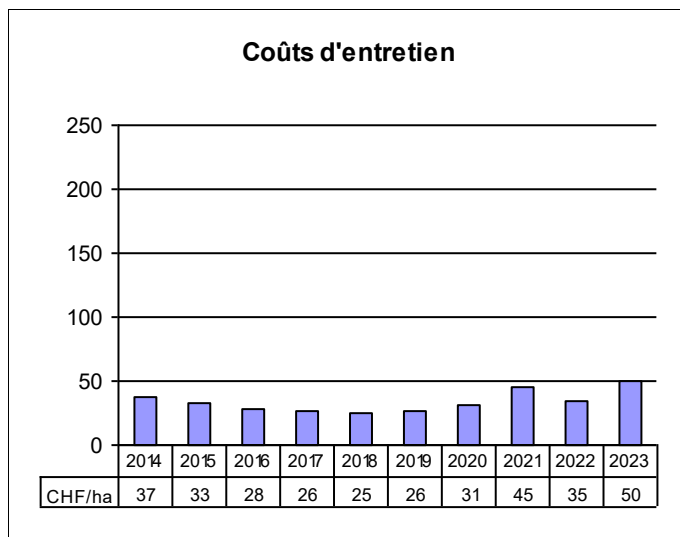
Exploitation forestière
Exploitation, possibilité et accroissement m3 par ha



Exploitation forestière
Assortiments principaux

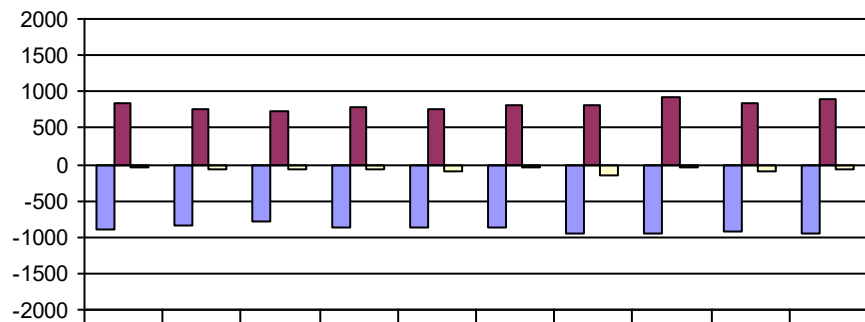


No Entreprise: **30** Plateau / Mittelland (FR)



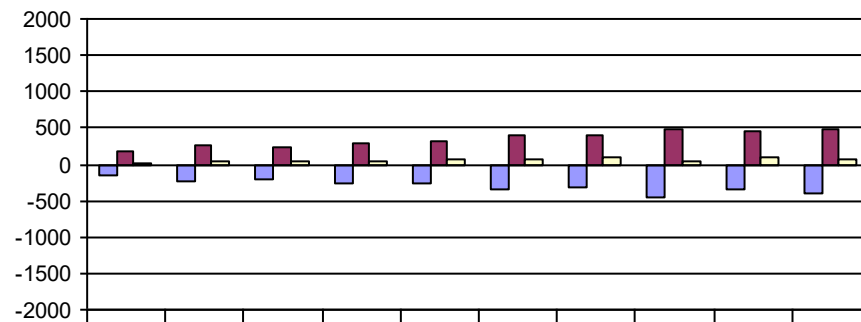
No Entreprise: **30** Plateau / Mittelland (FR)

Exploitation forestière



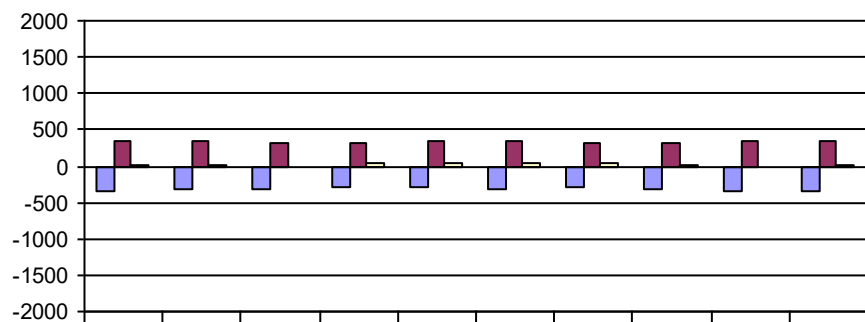
	2014	2015	2016	2017	2018	2019	2020	2021	2022	2023
Dépense CHF/ha	-884	-845	-794	-857	-856	-872	-965	-953	-927	-965
Recette CHF/ha	836	772	733	792	753	818	824	916	841	908
Résultat CHF/ha	-48	-73	-61	-65	-103	-54	-141	-37	-86	-57

Production de biens



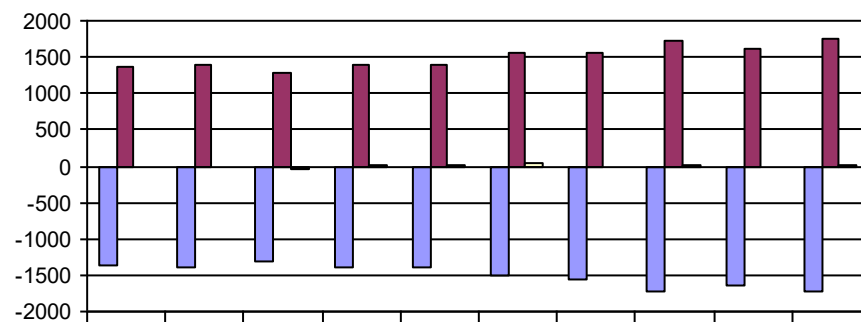
	2014	2015	2016	2017	2018	2019	2020	2021	2022	2023
Dépense CHF/ha	-158	-227	-200	-253	-254	-333	-311	-455	-350	-407
Recette CHF/ha	171	269	237	291	310	390	400	490	444	486
Résultat CHF/ha	13	42	37	38	56	57	89	35	94	79

Prestations de services



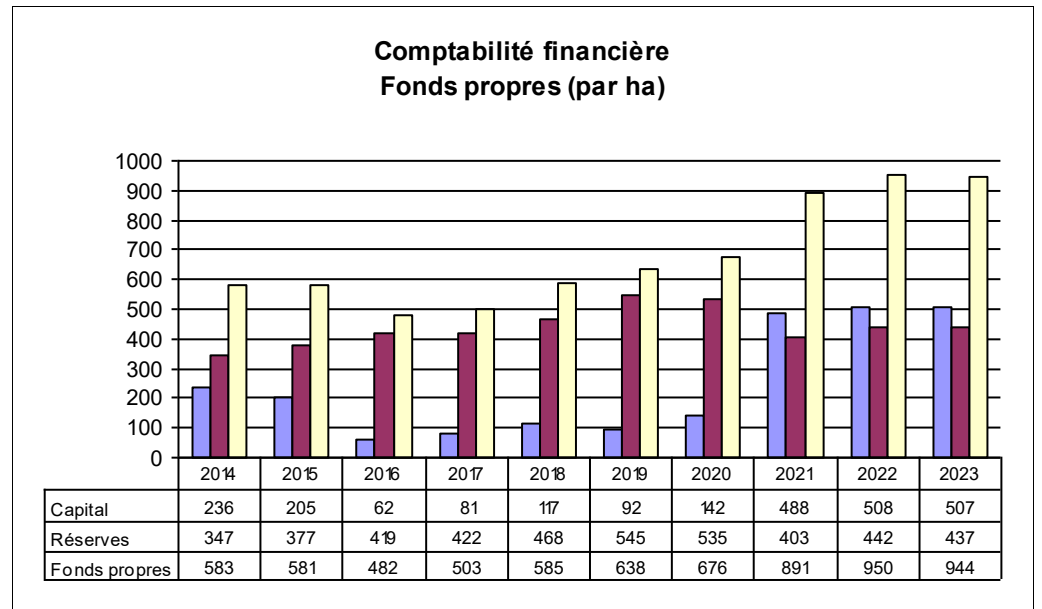
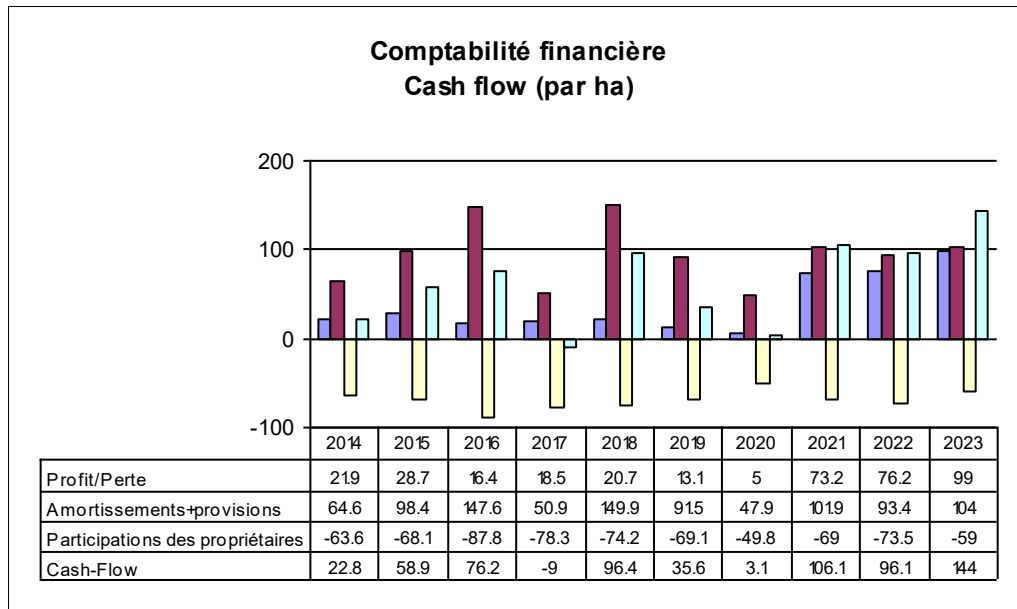
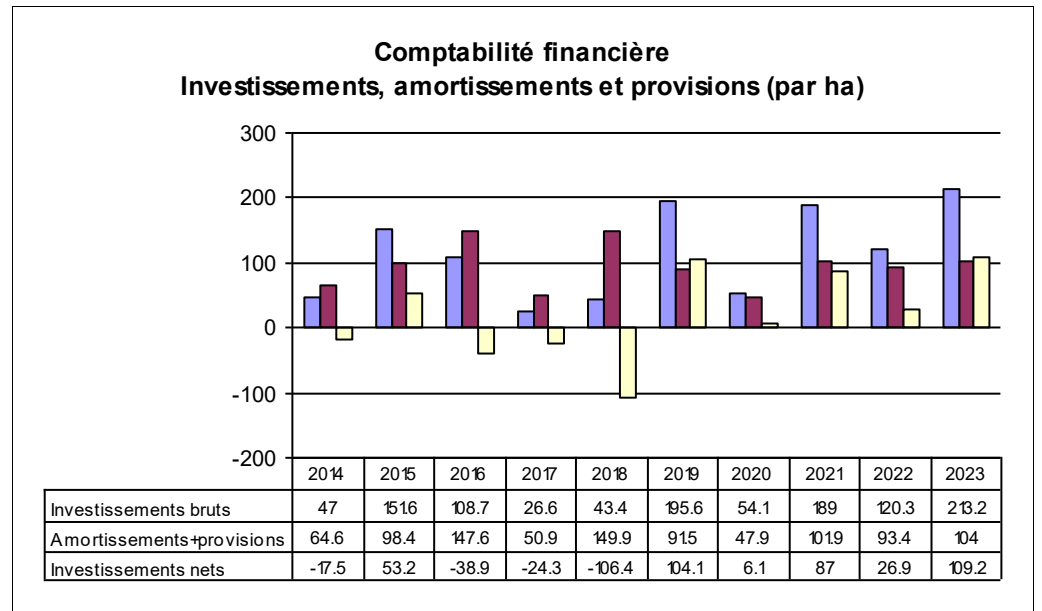
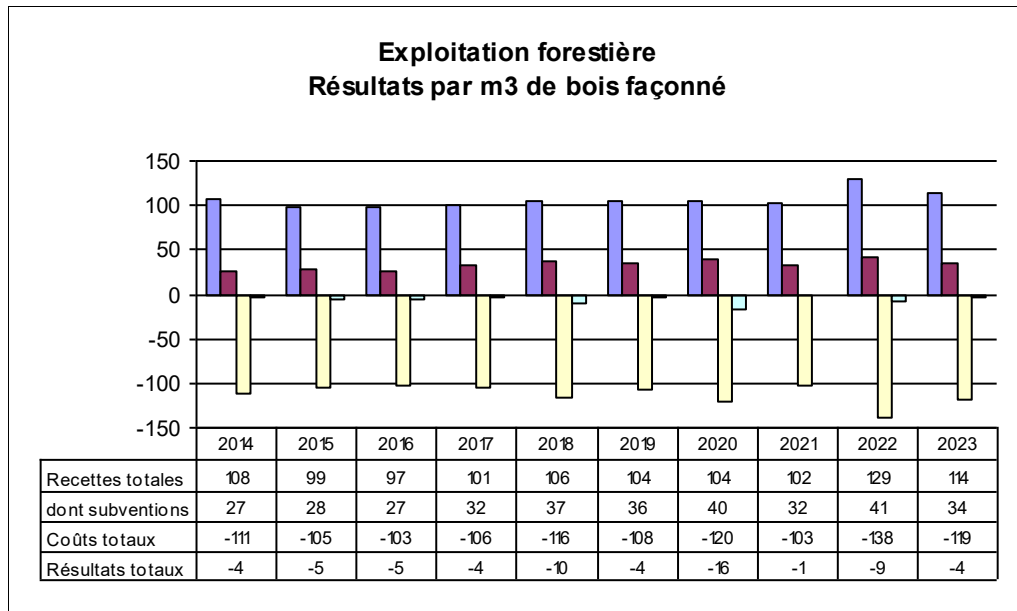
	2014	2015	2016	2017	2018	2019	2020	2021	2022	2023
Dépense CHF/ha	-335	-321	-323	-286	-285	-309	-289	-307	-355	-342
Recette CHF/ha	351	343	318	318	336	337	320	326	334	347
Résultat CHF/ha	16	22	-5	32	51	28	31	19	-21	5

Entreprise dans son ensemble

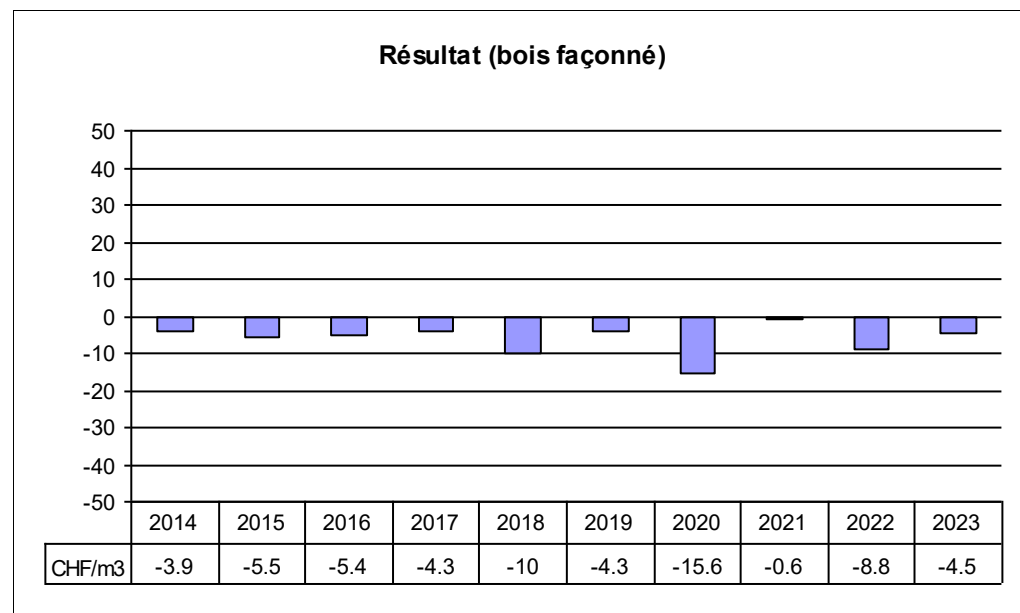
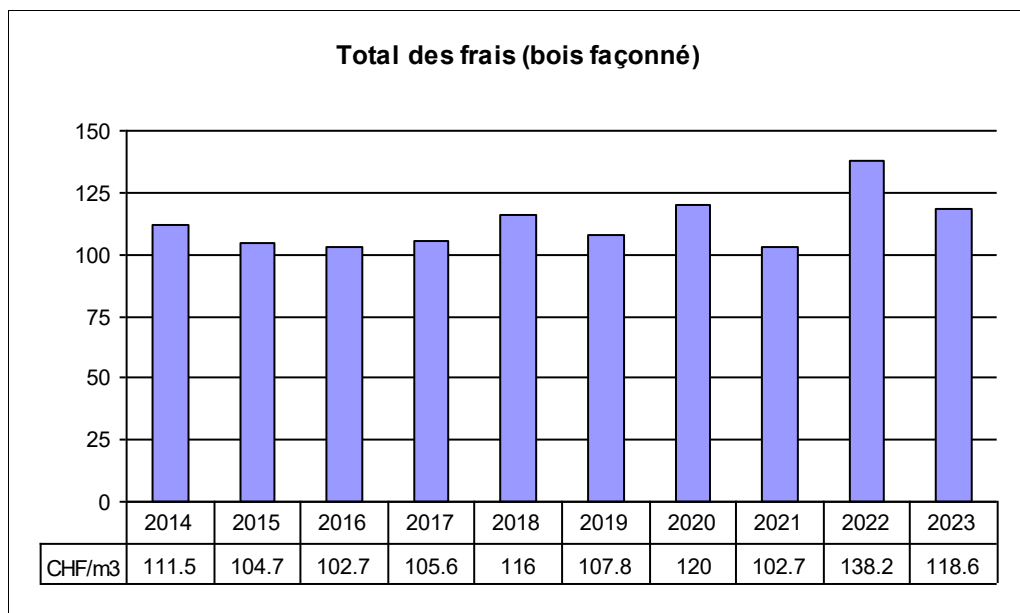
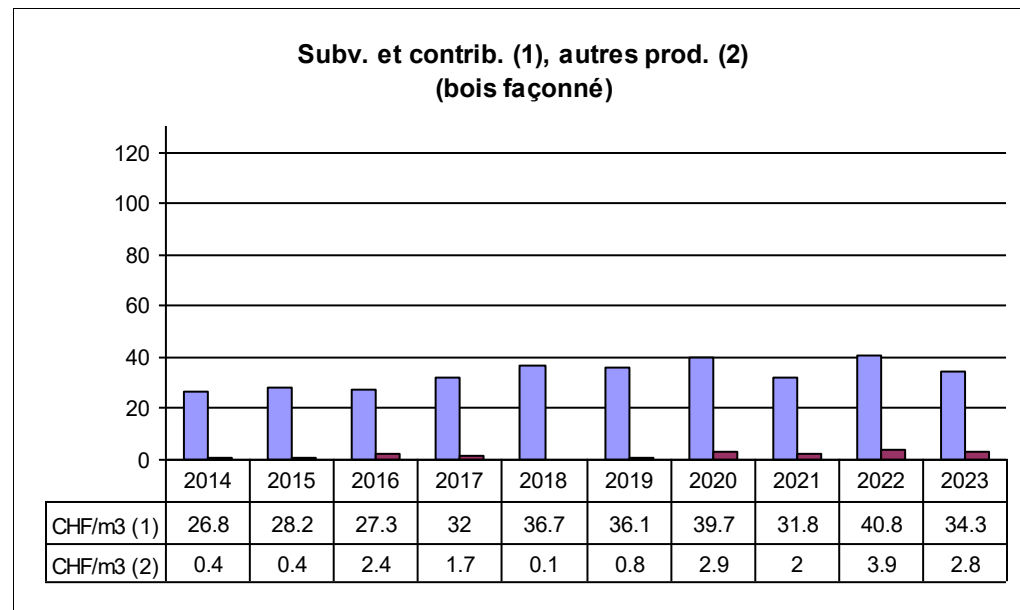
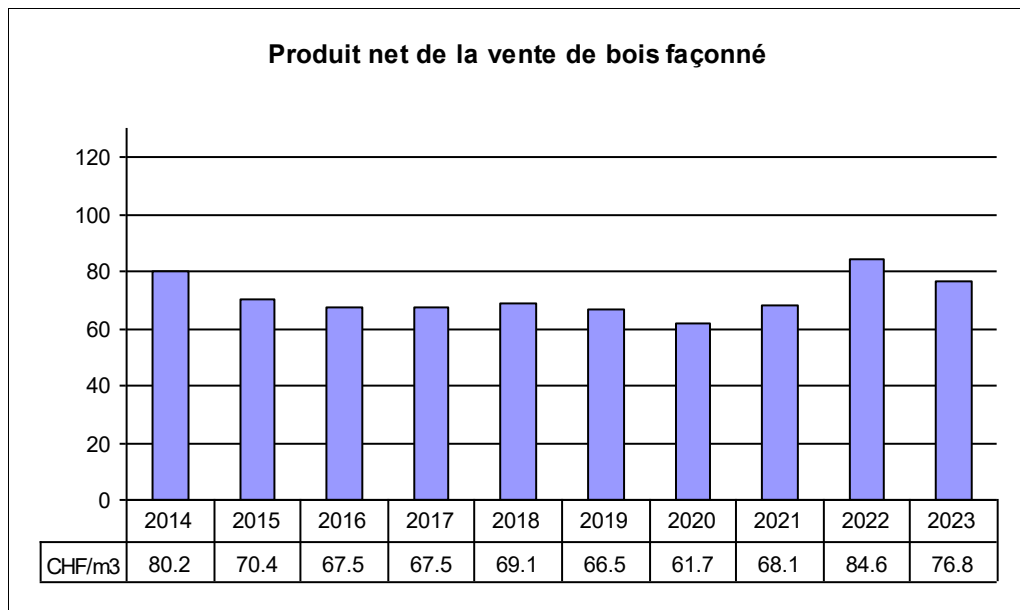


	2014	2015	2016	2017	2018	2019	2020	2021	2022	2023
Dépense CHF/ha	-1377	-1394	-1318	-1397	-1396	-1516	-1567	-1716	-1634	-1715
Recette CHF/ha	1358	1386	1290	1402	1400	1546	1546	1732	1619	1742
Résultat CHF/ha	-19	-8	-28	5	4	30	-21	16	-15	27

No Entreprise: 30 Plateau / Mittelland (FR)



No Entreprise: 30 Plateau / Mittelland (FR)



No Entreprise: **30** Plateau / Mittelland (FR)

